

Glycerol kinase Antibody
Rabbit mAb
Catalog # AP92569**Specification**

Glycerol kinase Antibody - Product Information

Application	WB, FC, IP
Primary Accession	P32189
Reactivity	Rat
Clonality	Monoclonal
Other Names	
GK1; GKD; Glycerokinase;	
Isotype	Rabbit IgG
Host	Rabbit
Calculated MW	61245 Da

Glycerol kinase Antibody - Additional Information

Dilution	WB~~1:1000 FC~~1:10~50 IP~~N/A
Purification	Affinity-chromatography
Immunogen	A synthesized peptide derived from human Glycerol kinase
Description	Key enzyme in the regulation of glycerol uptake and metabolism.
Storage Condition and Buffer	Rabbit IgG in phosphate buffered saline , pH 7.4, 150mM NaCl, 0.02% sodium azide and 50% glycerol. Store at +4°C short term. Store at -20°C long term. Avoid freeze / thaw cycle.

Glycerol kinase Antibody - Protein Information**Name** GK ([HGNC:4289](#))**Function**

Kinase that plays a key role in glycerol metabolism, catalyzing its phosphorylation to produce sn-glycerol 3-phosphate. Sn- glycerol 3-phosphate is a crucial intermediate in various metabolic pathways, such as the synthesis of glycerolipids and triglycerides, glycogenesis, glycolysis and gluconeogenesis.

Cellular Location

Mitochondrion outer membrane; Single-pass membrane protein. Nucleus. Cytoplasm, cytosol. Note=Glycerol kinase activity is more cytosolic in some tissues. It probably represents the expression of isoforms lacking a transmembrane domain [Isoform 4]: Cytoplasm, cytosol. Note=In adult tissues, such as liver the glycerol kinase activity is more cytosolic. It probably represents the expression of this isoform which lacks a transmembrane domain

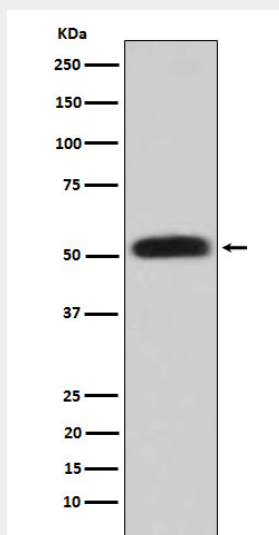
Tissue Location

[Isoform 2]: Widely expressed in fetal and adult tissues. [Isoform 4]: The sole isoform expressed in adult liver and kidney.

Glycerol kinase Antibody - Protocols

Provided below are standard protocols that you may find useful for product applications.

- [Western Blot](#)
- [Blocking Peptides](#)
- [Dot Blot](#)
- [Immunohistochemistry](#)
- [Immunofluorescence](#)
- [Immunoprecipitation](#)
- [Flow Cytometry](#)
- [Cell Culture](#)

Glycerol kinase Antibody - Images

Western blot analysis of Glycerol kinase expression in HepG2 cell lysate.